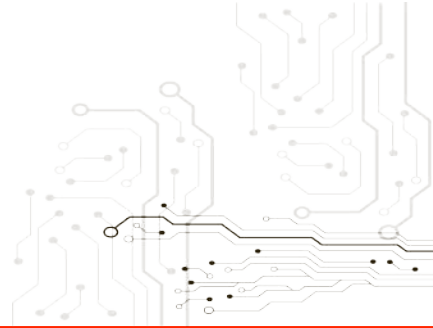




MUSCLE SERIES



FUEL LEVEL

Installation Instructions

V20191021

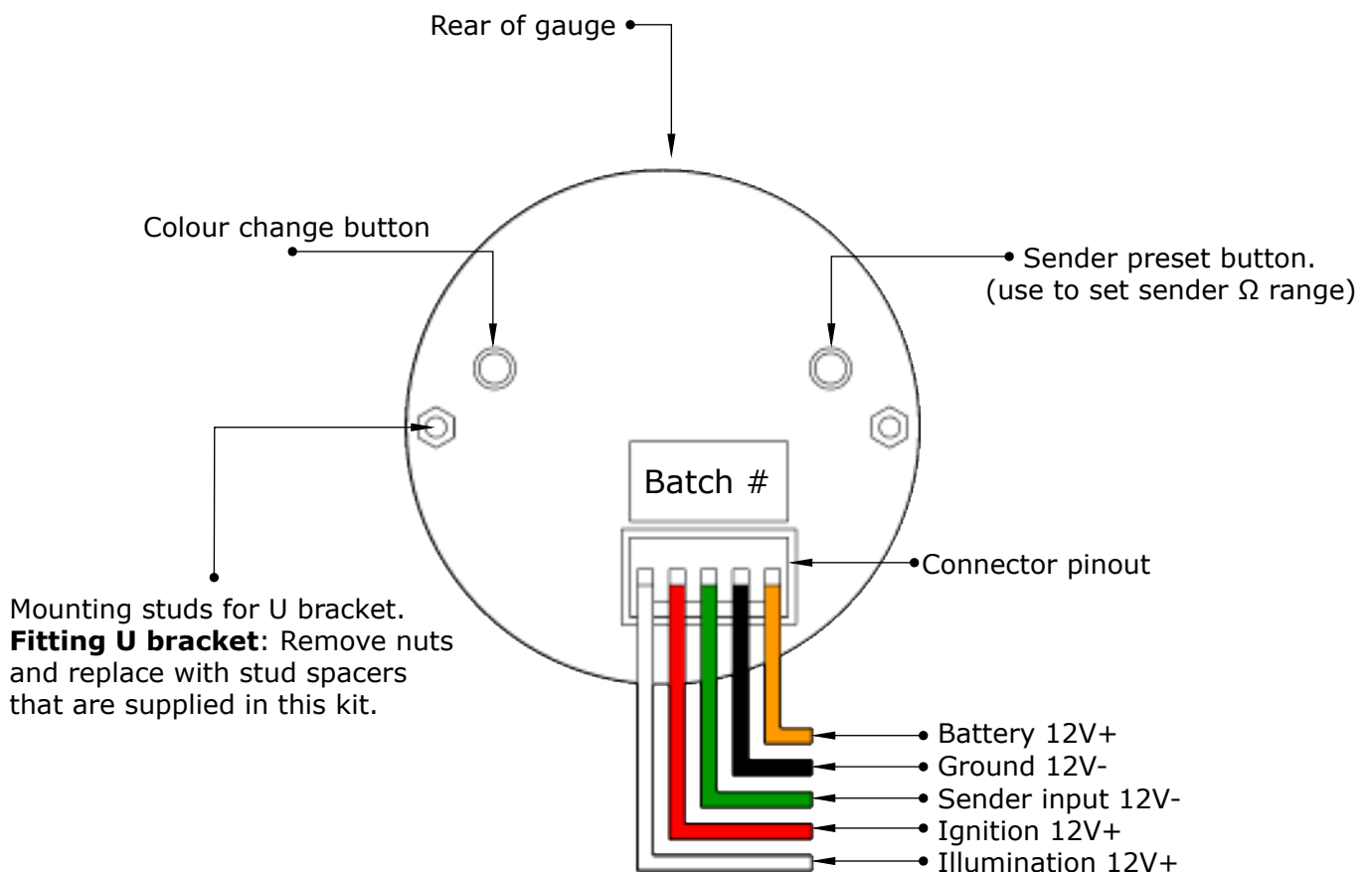
Important notes before installing:

- Installing this product to your vehicle may require an adaptor. SAAS make a large range of adaptors and installation parts, please check with your SAAS dealer for available adaptors.
- SAAS Muscle series gauges are designed for **12volt** systems **ONLY!**
- All installation work should be done by a qualified professional to avoid damage to this product.
- SAAS **RECOMMENDS** all products be tested prior to installation. This will save time and speed up the troubleshooting process if you encounter any issues.

Wiring Guide:

Wire colour	Wire Function	Wire Connection Location
White	Illumination 12V+ (NOT adjustable)	Park light circuit (do NOT connect to a dimmer)
Red	Ignition 12V+	Ignition harness / Fuse box
Green	Sender input 12V-	Dash cluster / Fuel tank sender
Black	Ground 12V-	Vehicle body
Orange	Battery 12V+	Ignition harness / Fuse box

Wiring Diagram Typical Layout



Sender Setup:

How to select a sender preset:

- Use the chart below to find a preset that suits your application. There are 9 presets to choose from, each preset is represented by a segment on the gauge dial. Empty = preset 1, 1/2 tank = preset 5 and full tank = preset 9.

- Sender setup mode:

- Turn ignition on.
- Press the sender preset button once on the back side of gauge to enter set up mode.
- The needle will move to its current preset.
- Each time the button is pressed the needle will move to the next preset.
- Once you have selected a preset, wait 3 seconds for the gauge to exit set up mode.
- Gauge is now programmed and ready to read.

Preset	Manufacturer	Ω scale									
1	Ford (Pre - 1989)	Dial	Empty	-	1/4	-	1/2	-	3/4	-	Full
	Chrysler	Ω	73	65.1	57.3	49.4	41.5	33.6	25.8	17.9	10
2	Ford	Dial	Empty	-	1/4	-	1/2	-	3/4	-	Full
	(1989 - Present)	Ω	16	33.7	51.5	69.2	87	104.7	122.5	140.2	158
3	GM (Pre - 1965)	Dial	Empty	-	1/4	-	1/2	-	3/4	-	Full
		Ω	0	3.8	7.5	11.3	15	18.8	22.5	26.3	30
4	GM	Dial	Empty	-	1/4	-	1/2	-	3/4	-	Full
	(1965 - Present)	Ω	0	11.3	22.5	33.8	45	56.3	67.5	78.8	90
5	Auto Meter Sender	Dial	Empty	-	1/4	-	1/2	-	3/4	-	Full
		Ω	240	206.3	172.5	138.8	105	87	69	51	33
6	Mitsubishi	Dial	Empty	-	1/4	-	1/2	-	3/4	-	Full
	Honda	Ω	107.5	94.9	82.4	69.8	57.3	44.7	32.1	19.6	7
7	Honda	Dial	Empty	-	1/4	-	1/2	-	3/4	-	Full
	(2001 - Present)	Ω	131	116.1	101.3	86.4	71.5	56.6	41.8	26.9	12
8	Japanese Sender	Dial	Empty	-	1/4	-	1/2	-	3/4	-	Full
		Ω	0	15	30	45	60	75	90	105	120
9	SAAS Sender	Dial	Empty	-	1/4	-	1/2	-	3/4	-	Full
	(sold separately)	Ω	10	31.3	52.5	73.8	95	116.3	137.5	158.8	180

Installation Tips:

- For other vehicles and applications not listed:

- **Option 1:** Remove fuel sender from tank (if possible) and measure the resistance @ Empty > Half > Full. Pick a preset from the above chart that has the closest values and use that preset.

- **Option 2:** Fill the fuel tank to its maximum, disconnect the fuel sender wire and measure the resistance at the sender, pick a preset from the above chart with the closest (Full) value and try that preset. If this method does not work then choose the next closest preset and try again.

GAUGE INFORMATION

Specifications

Gauge operating range	0Ω > 240Ω
Gauge operating voltage	8v > 18v
Gauge sender input voltage	12V- ONLY!
Gauge lighting type	4 colour LED (NON DIMMABLE)
Gauge lighting colours	green > red > blue > white (default colour green)
Mounting depth required for gauge	50mm (minimum)
Total depth of gauge	55mm (including bezel)
Mounting hole size for gauge	52mm

Troubleshooting:

Please note: If you are having problems with the installation of this product, please do not contact your retailer or SAAS until you have read **ALL** the troubleshooting notes below.

Problem	Possible Cause	Solution
-gauge not reading	-bad connection on gauge	-test for power at the back of the gauge
	-wrong preset selected	-check preset chart for correct application -see installation tips at bottom of chart
	-damaged fuel level sensor	-remove sender and test with multimeter
-no back lighting	-incorrect wiring	-refer to fitting instructions
	-connected to a dimmer	-refer to fitting instructions
-back lighting stuck on white	-incorrect wiring	-connect or check orange wire for 12V+
-back lighting defaults back to green	-incorrect wiring	-check orange wire for 12V+
	-battery was disconnected	-press button to set desired colour

Contents:

In The Box	Qty	Notes	Part No.
Fuel level gauge	1		
Wiring connector	1		SG3130
Mounting U bracket	1		SG31005
Mounting U bracket studs (M4x0.7 thread)	2		
Mounting U bracket nuts	2		
Mounting U bracket spring washers	2		
Fitting instructions	1		

Warranty Terms & Conditions:

SAAS Automotive Pty Ltd warrants this product against defects in factory workmanship and materials for a period of twelve (12) months from the date of original purchase. This warranty applies to the first retail purchaser, is non-transferable and covers only where the product has been subjected to normal use or service. Provision of this warranty shall not apply to any SAAS Automotive product that has been used for a purpose for which it is not designed, or which has been altered in any way that would be detrimental to the performance or life of the product, or misapplication, misuse, negligence or accident. Warranty claims to the manufacturer must be transportation prepaid and accompanied with dated proof of purchase. On any part or product found to be defective after examination by SAAS Automotive Pty Ltd, SAAS Automotive Pty Ltd will only repair or replace the merchandise through the original selling dealer or on a direct basis. SAAS Automotive Pty Ltd assumes no responsibility for diagnosis, removal and/or installation labour, loss of vehicle use, loss of time, inconvenience or any other consequential expenses. The warranties herein are in lieu of any other expressed or implied warranties, including any implied warranty of suitability, and any other obligation on the part of SAAS Automotive Pty Ltd, or the selling dealer.

For further assistance email: tech@saasautomotive.com.au



SINCE 1954

SAAS Automotive PTY LTD
25 Metrolink Circuit West, Campbellfield,
Victoria 3061 Australia

ABN: 48166279670
ACN: 166279670

Phone: +61 3 9930 0100
Fax: +61 3 8339 2270
Email: tech@saasautomotive.com.au
Web: www.shopsaas.com