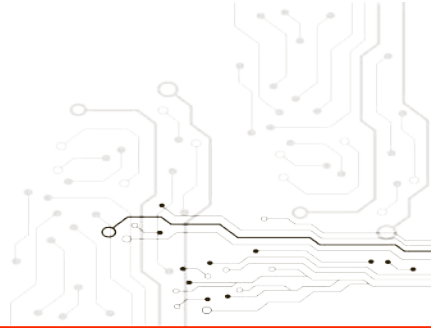




MUSCLE SERIES



IN-DASH TACHOMETER (90mm)

Installation Instructions

v20190528

Part No. SG31641 (white face)
Part No. SG31642 (black face)

Important notes before installing:

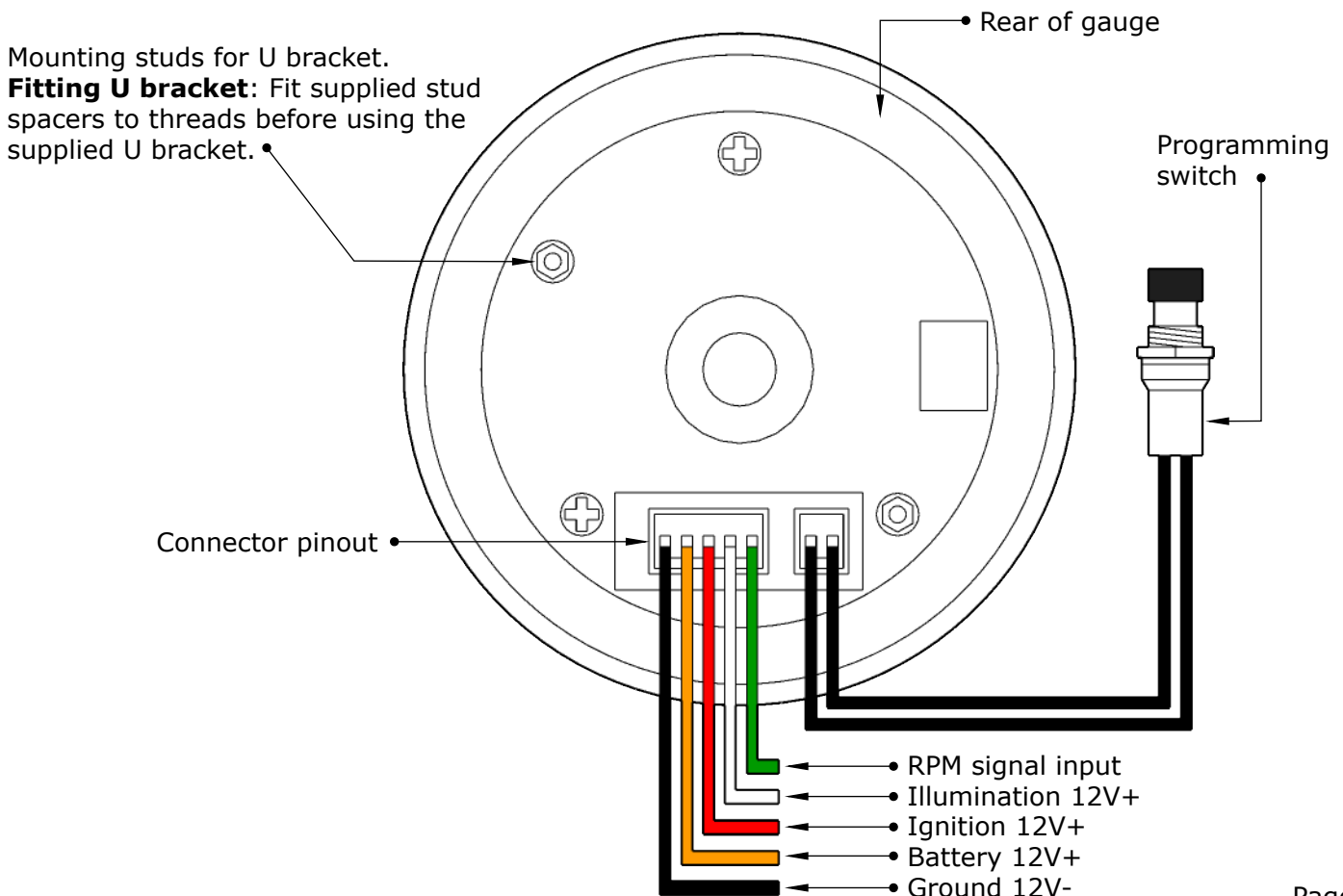
- **WARNING:** SAAS tachometers are designed to work with **factory** ignition systems **ONLY!** Warranty will be void if connected to aftermarket ignition systems such as, MSD, Mallory, Accel, Etc.. Aftermarket ignition systems will require additional parts to operate so please check with your ignition manufacturer for available parts/adaptors and recommended wiring locations.

- SAAS Muscle series tachometers are designed for **12volt PETROL** systems **ONLY!**
- All installation work should be done by a qualified professional to avoid damage to this product.
- SAAS **RECOMMENDS** all products be tested prior to installation. This will save time and speed up the troubleshooting process if you encounter any issues.

Wiring Guide:

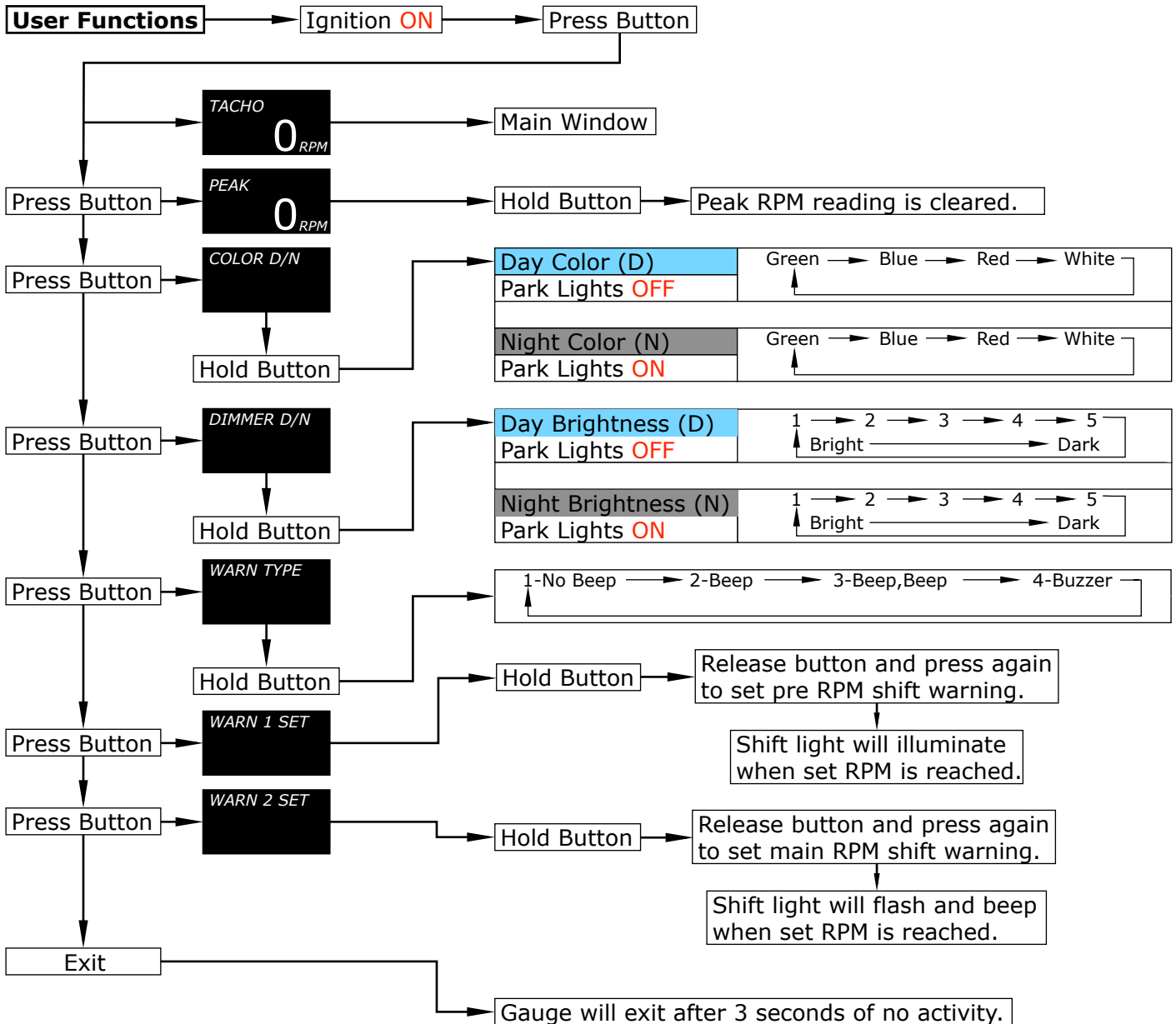
Wire colour	Wire Function	Wire Connection Location
Black	Ground 12V-	Vehicle body
Orange	Battery 12V+	Ignition harness / Fuse box
Red	Ignition 12V+	Ignition harness / Fuse box
White	Illumination 12V+	Park light circuit (do NOT connect to a dimmer)
Green	RPM signal input	Negative side of ignition coil or ECU tach wire

Wiring Diagram Typical Layout

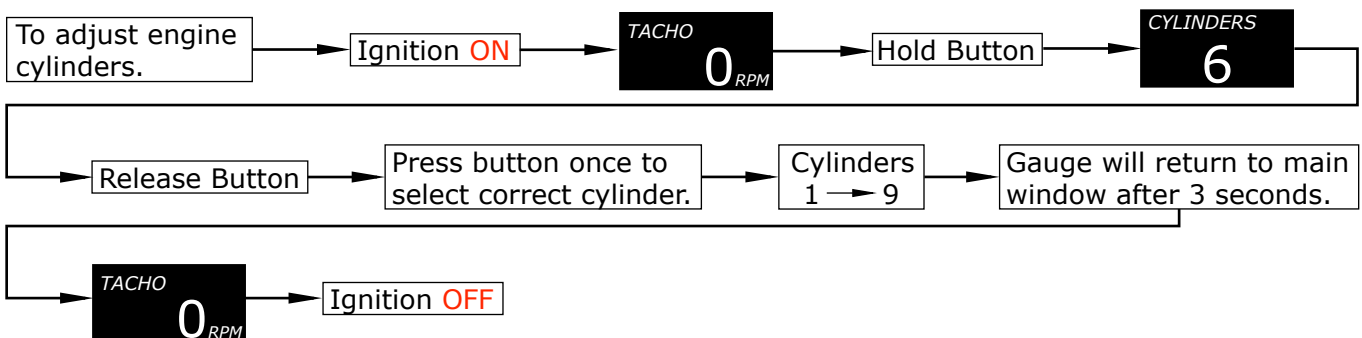


User Functions:

Note: The programming switch must be connected to the back of the gauge and mounted in a location that is easy to reach to access all functions.

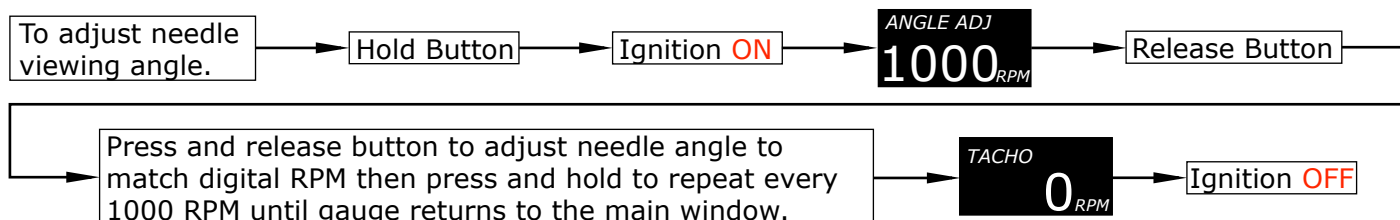


Engine Cylinder Set Up:



Installation Tip: For with vehicles with no tach wire or tach wire location is not know, set cylinder to (1) and connect signal wire (green) to **ONE** cylinder coil only! (e.g. **VE Commodore / FG Falcon**)

Needle Viewing Angle Function:



Troubleshooting:

Please note: If you are having problems with the installation of this product, please do not contact your retailer or SAAS until you have read **ALL** the troubleshooting notes below.

Problem	Possible Cause	Solution
-gauge not reading	-bad connection on gauge	-test for power at the back of the gauge
-needle jumps around	-bad signal from coil/ECU	-a resistor may be needed to clean up signal (see notes below)
	-diesel engine	-not compatible with diesel engines
	-ECU tach output is only 5volts	-see notes below
-gauge reading is out	-cylinder selector switch position	-check cylinder switch for correct setting
	-not compatible with ignition	-aftermarket ignitions will require an adaptor
	-bad wiring or old components	-fix wiring or replace worn components
-no back lighting	-incorrect wiring	-refer to fitting instructions

- Additional troubleshooting notes:

Problem: "Gauge reads but needle bounces around"

- If the tachometer reads but the needle bounces around, a 10K 1/4 watt resistor fitted to the green signal wire may fix this issue. Installing a resistor: Cut the green signal wire and connect one end of the resistor to the coil side and the other end of the resistor to the tacho side.

Problem: "ECU tach output is only 5volts"

- If the tach output from your vehicles ECU is only 5volts, a 10K 1/4 watt resistor is needed to increase the signal voltage to 12volts. (Nissan, Subaru, Etc..) Installing a resistor: Connect one side of the resistor to the **green** signal wire of the tacho and connect the other side of the resistor to the **red** 12volt ignition wire of the tacho. Do not cut any wires, just splice into. **WARNING:** Do not connect the resistor to any other wire or you **WILL** damage the tacho and your ECU!

GAUGE INFORMATION

Specifications

Gauge operating range	0 > 9,000 RPM
Gauge operating voltage	8v > 18v
Compatible engines	1>2>3>4>5>6>7>8>9 cylinder petrol engines ONLY!
Recommended signal locations	Negative (-) side of coil, ECU tach output or tach adaptor
Programming switch cable length	1.1mt
Wiring harness length	2mt
Gauge lighting type	white OLED window with 4 colour LED backlight
Gauge lighting colours	blue > red > green > white
Gauge dimensions	88mm x 70mm
Mounting depth required for gauge	55mm (minimum)
Mounting hole size for gauge	80mm / 3 1/4"

For further assistance email: tech@saasautomotive.com.au

Contents:

In The Box	Qty	Notes	Part No.
Tachometer gauge	1		
Wiring connector	1		
Programming switch	1		
Mounting U bracket	1		
Mounting U bracket studs (M4x0.7 thread)	2		
Mounting U bracket nuts	2		
Fitting instructions	1		

Warranty Terms & Conditions:

SAAS Automotive Pty Ltd warrants this product against defects in factory workmanship and materials for a period of twelve (**12**) months from the date of original purchase. This warranty applies to the first retail purchaser, is non-transferable and covers only where the product has been subjected to normal use or service. Provision of this warranty shall not apply to any SAAS Automotive product that has been used for a purpose for which it is not designed, or which has been altered in any way that would be detrimental to the performance or life of the product, or misapplication, misuse, negligence or accident. Warranty claims to the manufacturer must be transportation prepaid and accompanied with dated proof of purchase. On any part or product found to be defective after examination by SAAS Automotive Pty Ltd, SAAS Automotive Pty Ltd will only repair or replace the merchandise through the original selling dealer or on a direct basis. SAAS Automotive Pty Ltd assumes no responsibility for diagnosis, removal and/or installation labour, loss of vehicle use, loss of time, inconvenience or any other consequential expenses. The warranties herein are in lieu of any other expressed or implied warranties, including any implied warranty of suitability, and any other obligation on the part of SAAS Automotive Pty Ltd, or the selling dealer.

For further assistance email: tech@saasautomotive.com.au



SINCE 1954

SAAS Automotive PTY LTD
25 Metrolink Circuit West, Campbellfield,
Victoria 3061 Australia

ABN: 48166279670
ACN: 166279670

Phone: +61 3 9930 0100
Fax: +61 3 8339 2270
Email: tech@saasautomotive.com.au
Web: www.shopsaas.com