



DIESEL TACHOMETER (89mm)

Part No: SG21265
3 1/2 inch-89mm

Installation Instructions

v20230328

Important notes before installing:

- SAAS Streetline series tachometers are designed for **12 volt** systems **ONLY!**
- All installation work should be done by a qualified professional to avoid damage to this product.
- SAAS **RECOMMENDS** all products be tested prior to installation. This will save time and speed up the troubleshooting process if you encounter any issues.

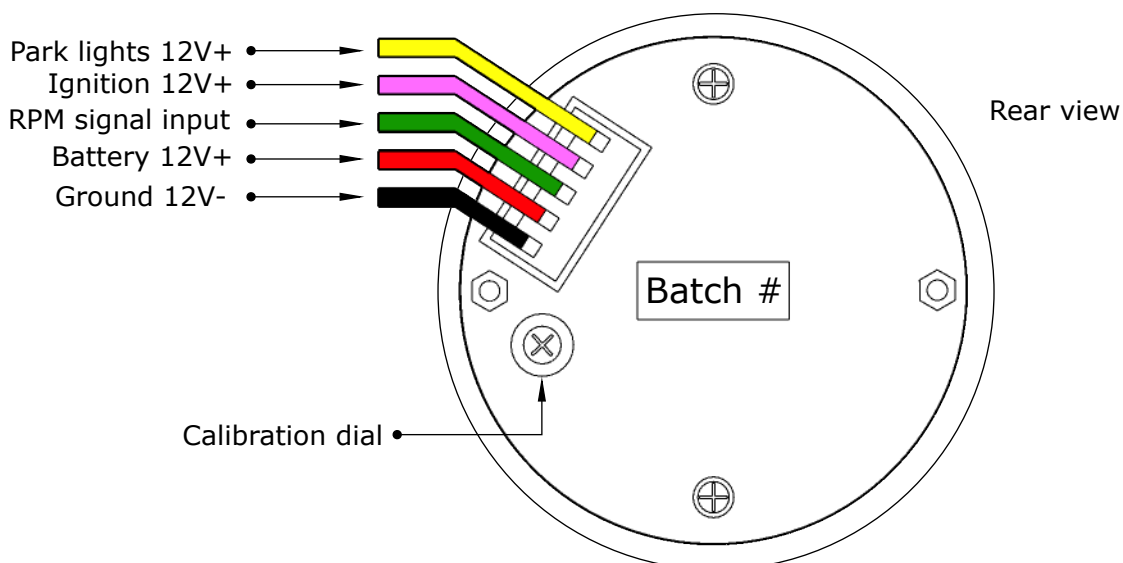
- **BEFORE** installing, please check our website (shopsaas.com) for the latest fitting instructions. If the top left corner (**v**) number is different to website, please use instructions from website.

Wiring Guide:

Wire colour	Wire Function	Wire Connection Location
Black	Ground 12V-	Vehicle body
Red	Battery 12V+	Battery / fuse box
Green	RPM signal input	(W) terminal on alternator or ECU tach wire
Pink	Ignition 12V+	Ignition harness / fuse box
Yellow	Park lights 12V+	Park light circuit (do NOT connect to a dimmer)

Wiring Diagram

Typical Layout



Tachometer Setup:

How to calibrate RPM reading:

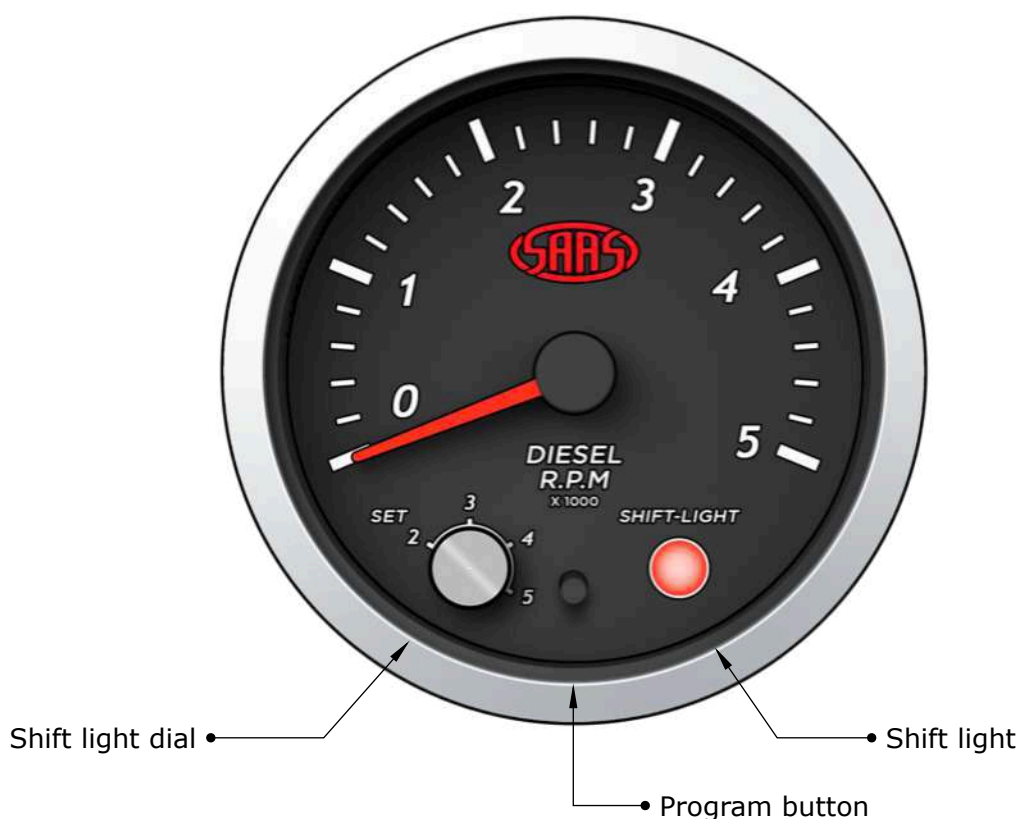
- Start engine and wait for idle to settle > using a small screw driver, turn the calibration dial on the rear of the gauge in either direction **slowly** to match engine RPM.

How to set shift light:

- Move the shift light dial to a preferred RPM. LED light will illuminate when preferred RPM is reached.

How to set backlight colour:

- Turn ignition on > press program button once and release to cycle through available colours.



Installation Tips:

Installation Tip:

- For best results, SAAS recommends calibrating the tachometer when your engine is at normal operating temperature.

For further assistance email: tech@saasautomotive.com.au

GAUGE INFORMATION

Specifications

Gauge operating range	0 > 5,000 RPM
Gauge operating voltage	8v > 18v
RPM signal location	Alternator (W) terminal / ECU tach wire
Gauge lighting type	7 colour LED (NON-DIMMABLE)
Gauge lighting colours	blue/red/green/purple/ice blue/pale green/white/needle only/scan
Mounting depth required for gauge	50mm (minimum)
Total depth of gauge	55mm (including bezel)
Mounting hole size for gauge	80mm

Troubleshooting:

Please note: If you are having problems with the installation of this product, please do not contact your retailer or SAAS until you have read **ALL** the troubleshooting notes below.

Problem	Possible Cause	Solution
-gauge not reading -needle jumps around	-bad connection on gauge	-test for power at the back of the gauge
	-bad signal from source	-a resistor may be needed to clean up signal (see notes below)
-gauge reading is out	-gauge not calibrated	-adjust calibration dial at rear of gauge
	-voltage issue	-power, ground and signal wires must have 12 volts (minimum) when idling!
	-bad wiring or old components	-fix wiring or replace worn components
-no backlighting	-incorrect wiring	-refer to fitting instructions

- Additional troubleshooting notes:

Problem: "Gauge reads but needle bounces around"

- If the tachometer reads but the needle bounces around, a 10K 1/4 watt resistor fitted to the green signal wire may fix this issue. Installing a resistor: Cut the green signal wire and connect one end of the resistor to the coil side, and the other end of the resistor to the tacho side.

Contents:

In The Box	Qty	Notes	Part No.
Tachometer gauge	1		
Wiring connector	1		SG2161
Mounting bracket	1		
Fitting instructions	1		

Warranty Terms & Conditions:

SAAS Automotive Pty Ltd warrants this product against defects in factory workmanship and materials for a period of twelve (**12**) months from the date of original purchase. This warranty applies to the first retail purchaser, is non-transferable and covers only where the product has been subjected to normal use or service. Provision of this warranty shall not apply to any SAAS Automotive product that has been used for a purpose for which it is not designed, or which has been altered in any way that would be detrimental to the performance or life of the product, or misapplication, misuse, negligence or accident. Warranty claims to the manufacturer must be transportation prepaid and accompanied with dated proof of purchase. On any part or product found to be defective after examination by SAAS Automotive Pty Ltd, SAAS Automotive Pty Ltd will only repair or replace the merchandise through the original selling dealer or on a direct basis. SAAS Automotive Pty Ltd assumes no responsibility for diagnosis, removal and/or installation labour, loss of vehicle use, loss of time, inconvenience or any other consequential expenses. The warranties herein are in lieu of any other expressed or implied warranties, including any implied warranty of suitability, and any other obligation on the part of SAAS Automotive Pty Ltd, or the selling dealer.

For further assistance email: tech@saasautomotive.com.au



SINCE 1954

SAAS Automotive PTY LTD
25 Metrolink Circuit West, Campbellfield,
Victoria 3061 Australia

ABN: 48166279670
ACN: 166279670

Phone: +61 3 9930 0100
Fax: +61 3 8339 2270
Email: tech@saasautomotive.com.au
Web: www.shopsaas.com