

## **FUEL LEVEL**

### **Installation Instructions**

Part No: SG21290  
2 inch-52mm

v20210913

#### **Important notes before installing:**

- Installing this product to your vehicle may require an adaptor. SAAS make a large range of adaptors and installation parts, please check with your SAAS dealer for available adaptors.
- SAAS Streetline series gauges are designed for **12 volt** systems **ONLY!**
- All installation work should be done by a qualified professional to avoid damage to this product.
- SAAS **RECOMMENDS** all products be tested prior to installation. This will save time and speed up the troubleshooting process if you encounter any issues.

- **BEFORE** installing, please check our website ([shopsaas.com](http://shopsaas.com)) for the latest fitting instructions. If the top left corner (v) number is different to website, please use instructions from website.

#### **Wiring Guide:**

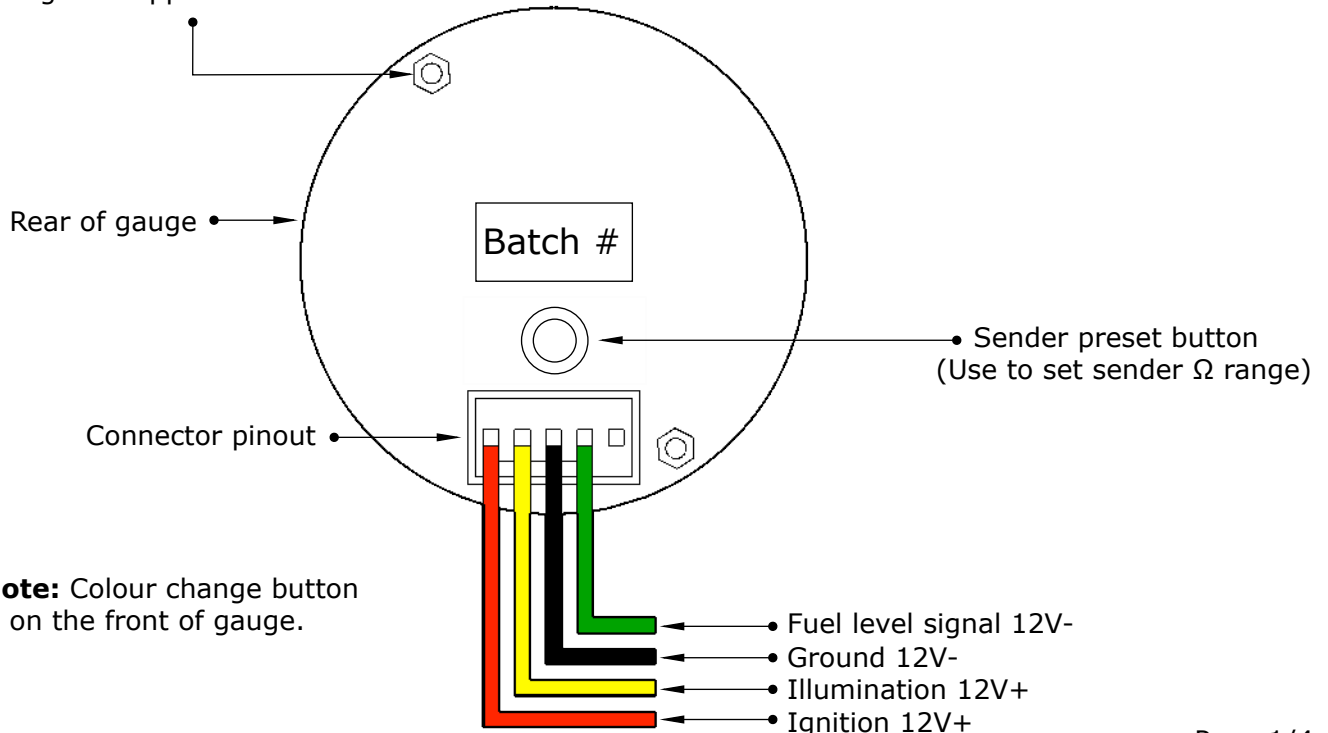
Wire colour	Wire Function	Wire Connection Location
Red	Ignition 12V+	Ignition harness / fuse box
Yellow	Illumination 12V+ ( <b>NOT</b> adjustable)	Park light circuit (do <b>NOT</b> connect to a dimmer)
Black	Ground 12V-	Vehicle body
Green	Fuel level input signal	Fuel sender

### **Wiring Diagram**

#### **Typical Layout**

Mounting studs for U bracket.

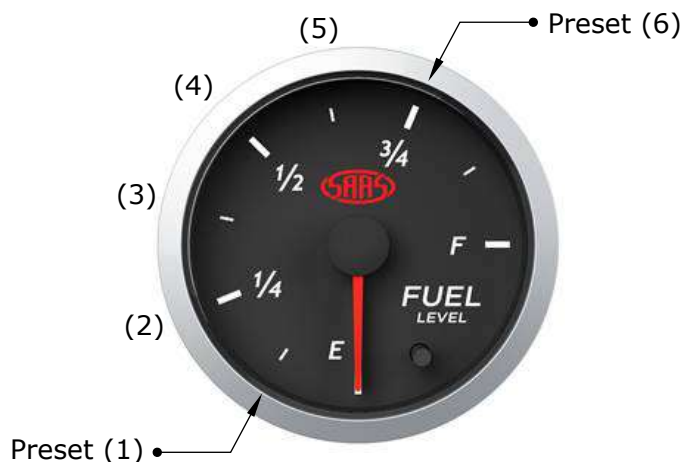
**Fitting U bracket:** Fit supplied stud spacers to threads before using the supplied U bracket.



## Sender Setup:

### How to select a sender preset:

- Use the chart below to find a preset that suits your application. There are 6 presets to choose from, each preset is represented by a segment on the gauge dial.



### - Sender setup mode:

- Turn ignition on.
- Press and hold the sender preset button for 8 seconds, then release button.
- Press and release button again to move the needle to your preferred preset.
- Once you have selected a preset, wait 5 seconds for the gauge to exit setup mode.
- Gauge is now programmed.

Preset	Manufacturer	$\Omega$ scale									
1	Auto Meter Sender	Dial	Empty	-	1/4	-	1/2	-	3/4	-	Full
		$\Omega$	240								33
2	VDO / GM	Dial	Empty	-	1/4	-	1/2	-	3/4	-	Full
		$\Omega$	0								90
3	SAAS Sender (sold separately)	Dial	Empty	-	1/4	-	1/2	-	3/4	-	Full
		$\Omega$	10								180
4	Universal	Dial	Empty	-	1/4	-	1/2	-	3/4	-	Full
		$\Omega$	0								190
5	Universal	Dial	Empty	-	1/4	-	1/2	-	3/4	-	Full
		$\Omega$	190								0
6	Universal	Dial	Empty	-	1/4	-	1/2	-	3/4	-	Full
		$\Omega$	33								240

## Installation Tips:

### - For other vehicle's and application's not listed:

- **Option 1:** Remove fuel sender from tank (if possible) and measure the resistance @ empty and full. Pick a preset from the above chart that has the closest values and use that preset.

- **Option 2:** Fill the fuel tank to its maximum, disconnect the fuel sender wire and measure the resistance at the sender. Pick a preset from the above chart with the closest (Full) value and try that preset. If this method does not work then choose the next closest preset and try again.

# **GAUGE INFORMATION**

## *Specifications*

Gauge and sender operating range	0Ω > 240Ω
Gauge operating voltage	8v > 18v
Gauge sender input voltage	12V- ONLY!
Gauge lighting type	7 colour LED (NON-DIMMABLE)
Gauge lighting colours	blue/red/green/purple/ice blue/pale green/white/needle only/scan
Mounting depth required for gauge	55mm (minimum)
Total depth of gauge	60mm (including bezel)
Mounting hole size for gauge	52mm

## ***Troubleshooting:***

**Please note:** If you are having problems with the installation of this product, please do not contact your retailer or SAAS until you have read **ALL** the troubleshooting notes below.

Problem	Possible Cause	Solution
-gauge not reading	-bad connection on gauge	-test for power at the back of the gauge
	-wrong preset selected	-check preset chart for correct application
	-damaged fuel level sensor	-see installation tips at bottom of chart
-needle jumps around	-bad ground on fuel sender	-remove sender and test with multimeter
		-run another ground wire to the fuel sender or tank
-no backlighting	-incorrect wiring	-refer to fitting instructions
	-connected to a dimmer	-refer to fitting instructions

## ***Contents:***

In The Box	Qty	Notes	Part No.
Fuel level gauge	1		
Wiring connector	1		SG2190
Mounting U bracket	1		SG21005
Mounting U bracket studs (M4x0.7 thread)	2		
Mounting U bracket nuts	2		
Fitting instructions	1		

**For further assistance email: [tech@saasautomotive.com.au](mailto:tech@saasautomotive.com.au)**

## **Warranty Terms & Conditions:**

SAAS Automotive Pty Ltd warrants this product against defects in factory workmanship and materials for a period of twelve (**12**) months from the date of original purchase. This warranty applies to the first retail purchaser, is non-transferable and covers only where the product has been subjected to normal use or service. Provision of this warranty shall not apply to any SAAS Automotive product that has been used for a purpose for which it is not designed, or which has been altered in any way that would be detrimental to the performance or life of the product, or misapplication, misuse, negligence or accident. Warranty claims to the manufacturer must be transportation prepaid and accompanied with dated proof of purchase. On any part or product found to be defective after examination by SAAS Automotive Pty Ltd, SAAS Automotive Pty Ltd will only repair or replace the merchandise through the original selling dealer or on a direct basis. SAAS Automotive Pty Ltd assumes no responsibility for diagnosis, removal and/or installation labour, loss of vehicle use, loss of time, inconvenience or any other consequential expenses. The warranties herein are in lieu of any other expressed or implied warranties, including any implied warranty of suitability, and any other obligation on the part of SAAS Automotive Pty Ltd, or the selling dealer.

**For further assistance email: [tech@saasautomotive.com.au](mailto:tech@saasautomotive.com.au)**



SINCE 1954

SAAS Automotive PTY LTD  
25 Metrolink Circuit West, Campbellfield,  
Victoria 3061 Australia

ABN: 48166279670  
ACN: 166279670

Phone: +61 3 9930 0100  
Fax: +61 3 8339 2270  
Email: [tech@saasautomotive.com.au](mailto:tech@saasautomotive.com.au)  
Web: [www.shopsaas.com](http://www.shopsaas.com)