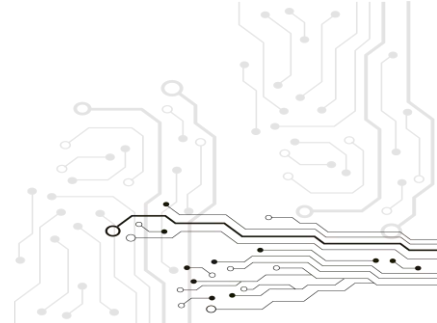




AUTOMOTIVE PTY LTD

25 Metrolink Circuit West Campbellfield
Victoria 3061 Australia
ABN: 48166279670 ACN: 166279670

Phone: +61 3 9930 0100
Fax: +61 3 8339 2270
Email: sales@saasautomotive.com.au



SWITCH TURBO TIMER Installation Instructions

V20200519

Important notes before installing:

- SAAS switch turbo timers are designed for 12volt systems **ONLY!**
- All installation work should be done by a qualified professional to avoid damage to this product or to your vehicle!

Wiring Guide:

Wire colour	Wire Function	Wire Connection Location
Red	Battery 12V+	Ignition harness / Fuse box
Yellow	Ignition 12V+	Ignition harness / Fuse box
Blue	Ignition 2/ACC 12V+	Ignition harness / Fuse box
Black	Ground 12V-	Vehicle body
Grey	Park brake safety switch 12V-	Park brake switch
Orange	Alarm ground output 12V-	OEM/aftermarket car alarm

- **Red** wire must always have 12V+ power.
- **Yellow** wire must have 12V+ power when the ignition is in the **ON** and **START** (cranking) position.
- **Blue** wire can be connected to a 2nd ignition wire or an accessories wire depending on the vehicle.
- **Black** wire must be connected to a good grounding point, usually the vehicles body/chassis.
- **Grey** wire must be connected to the vehicles park brake switch for manual transmissions, for automatic transmissions this wire can be connected to either the park brake switch or to ground.
- **Orange** wire is optional, this wire provides a 12V- output when the timer has switched off. This output can be used to trigger a factory or aftermarket car alarm.

Note: If you wish to use this feature please check if your car alarm can perform this function, most factory alarm/keyless entry systems do but some aftermarket car alarm systems may not.

Timer Functions:

Selecting Modes Auto/Manual:

- Turn ignition on, press the set button for 3 seconds, the timer will beep 2 or 3 times, 2 "beeps" for manual mode and 3 "beeps" for auto mode. Repeat procedure to change modes.

Manual Mode:

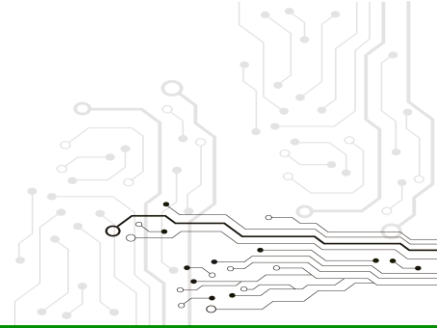
- Turn ignition on, press the set button to adjust your run time. Timer can **only** be set for: 30seconds or 1 to 9 minutes.

Auto Mode:

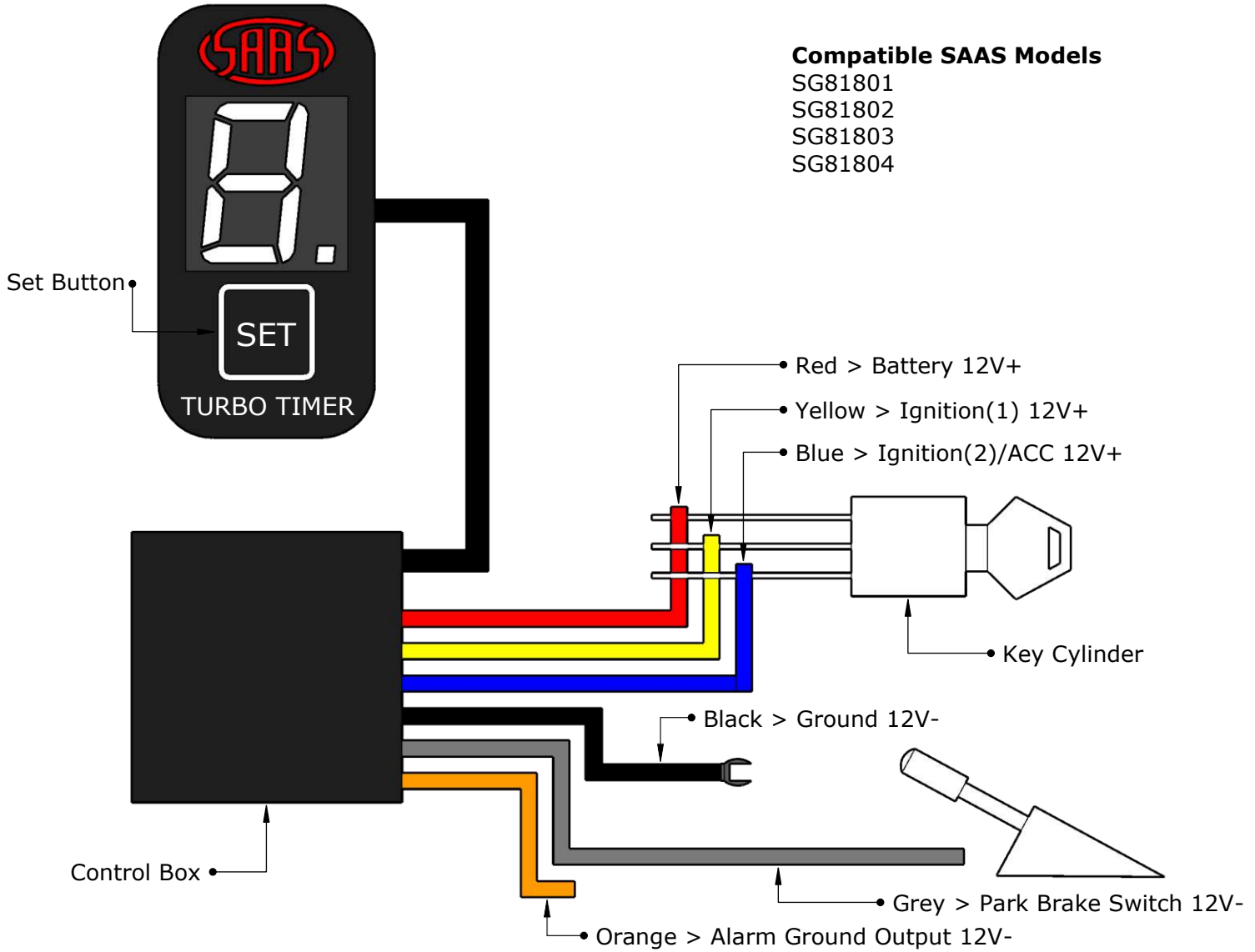
- This mode will automatically work out the run time based on driving conditions. Please note that this feature may not work correctly on some vehicles.
- Testing auto mode:
 - (1) select auto mode
 - (2) start engine
 - (3) rev engine to 2000-2500 rpm and hold for 1 or 2 minutes
 - (4) the turbo timer display should start to increase if set correctly.

- Switching timer off:

Pressing and holding the set button for 2 seconds will switch the timer off regardless of mode.



Wiring Diagram (for key ignition systems)



Troubleshooting:

Problem	Possible Cause	Solution
-engine switches off when key is removed	-wrong ignition wire	-locate the correct ignition wire/wires
	-park brake cable not connected	-park brake cable must be connected
-auto mode not working	-mode not selected correctly	-select auto mode
	-mode not compatible with vehicle	-select manual mode
-time increases on its own	-auto mode has been selected	-select manual mode