



# WATER/TRANS TEMP DIGITAL

## Installation Instructions

Part No: SG912022  
2 inch-52mm

v20210809

### Important notes before installing:

- Installing this product to your vehicle may require an adaptor. SAAS offer a large range of adaptors and installation parts; please check with your SAAS dealer for available adaptors.
- SAAS Trax series gauges are designed for **12volt** systems **ONLY!**
- All installation work should be done by a qualified professional to avoid damage to this product.
- SAAS **RECOMMENDS** all products be tested prior to installation. This will save time and speed up the troubleshooting process if you encounter any issues.

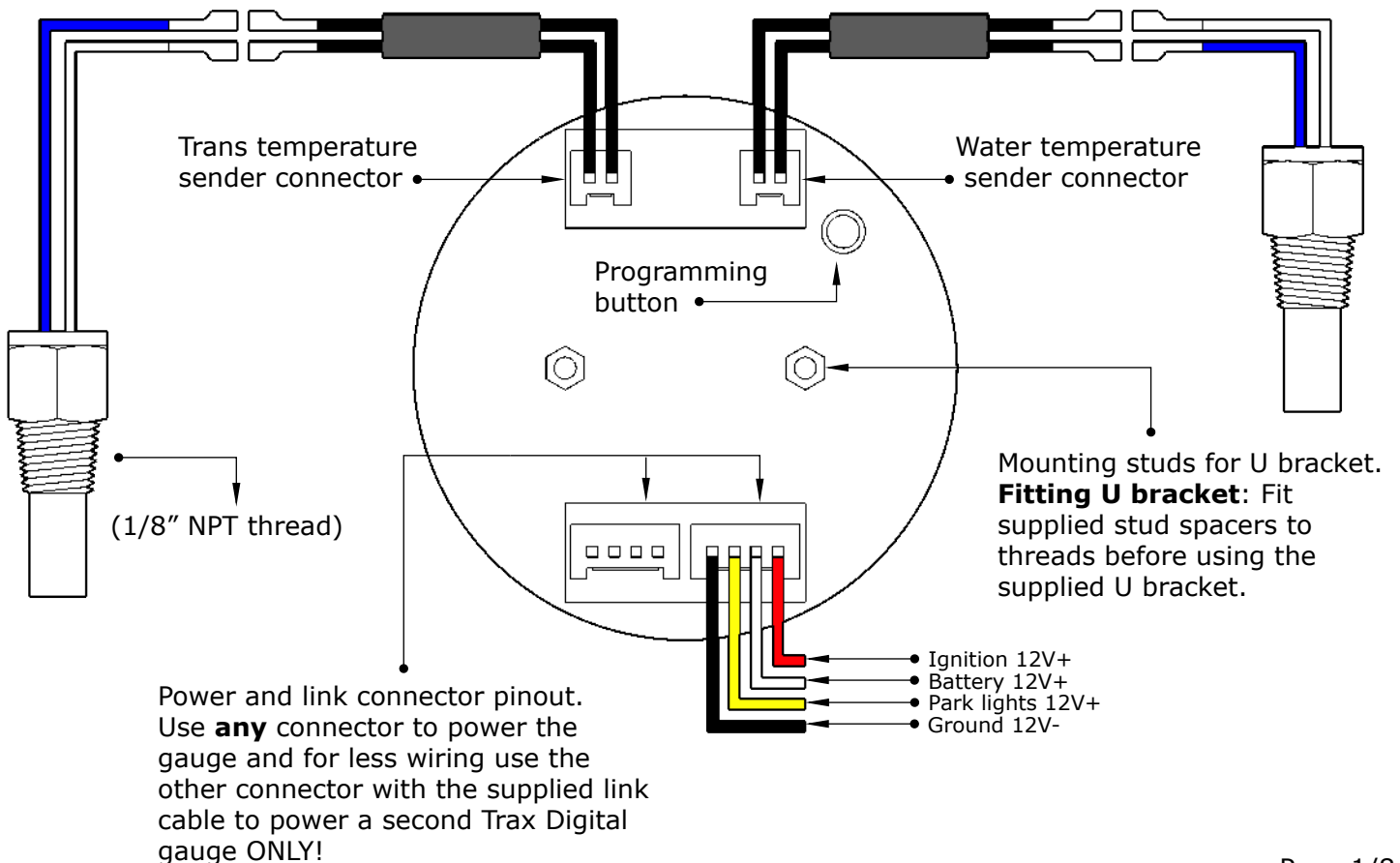
- **BEFORE** installing, please check our website ([shopsaas.com](http://shopsaas.com)) for the latest fitting instructions. If the top left corner (**v**) number is different to website, please use instructions from website.

### Wiring Guide:

| Wire colour | Wire Function    | Wire Connection Location                               |
|-------------|------------------|--|
| Black       | Ground 12V-      | Vehicle body   |
| Yellow      | Park lights 12V+ | Park light circuit (do <b>NOT</b> connect to a dimmer) |
| White       | Battery 12V+     | Ignition harness / Fuse box                            |
| Red         | Ignition 12V+    | Ignition harness / Fuse box                            |

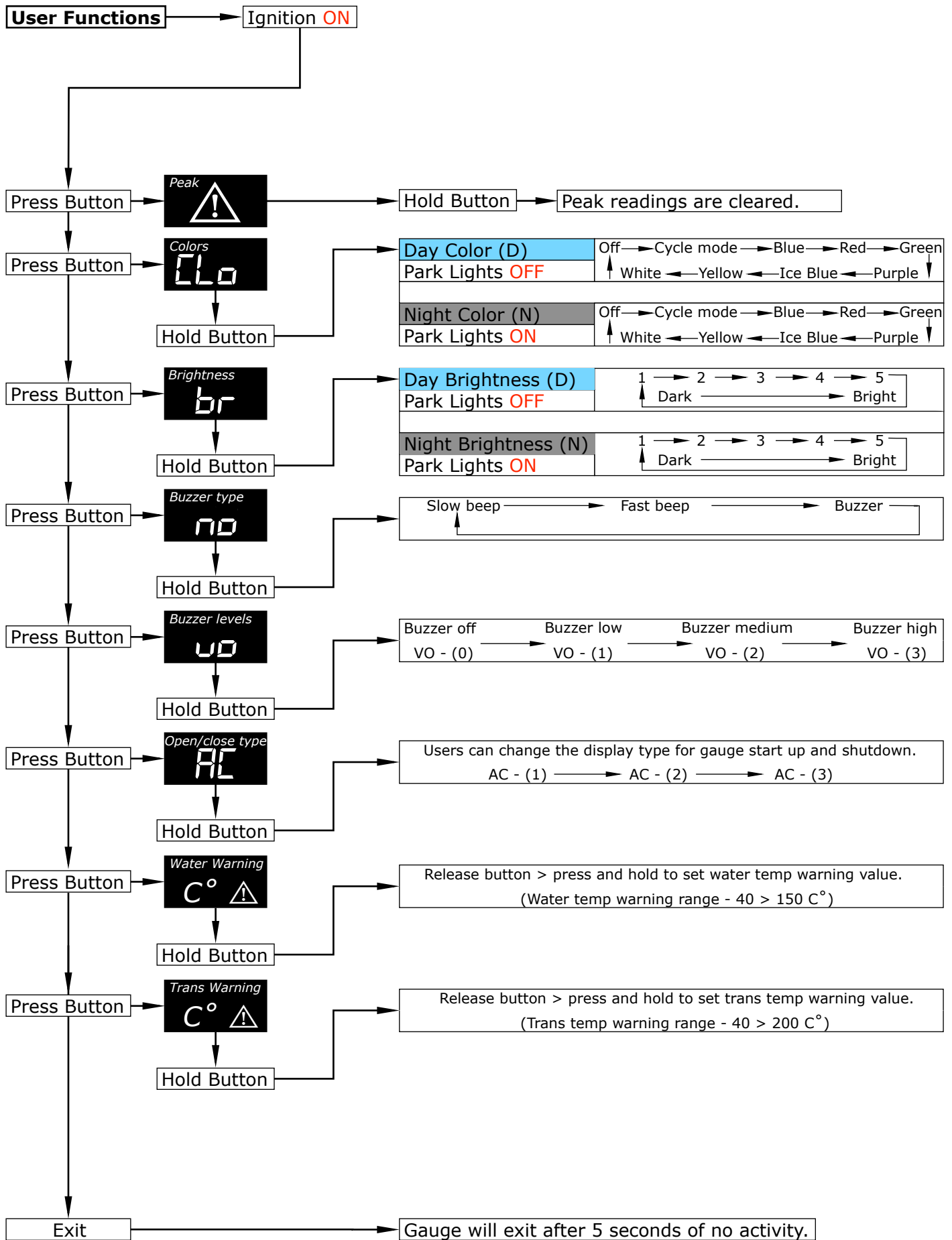
### Wiring Diagram

#### Typical Layout



# User Functions:

**Note:** Use the programming button on the back of the gauge to set the below functions.

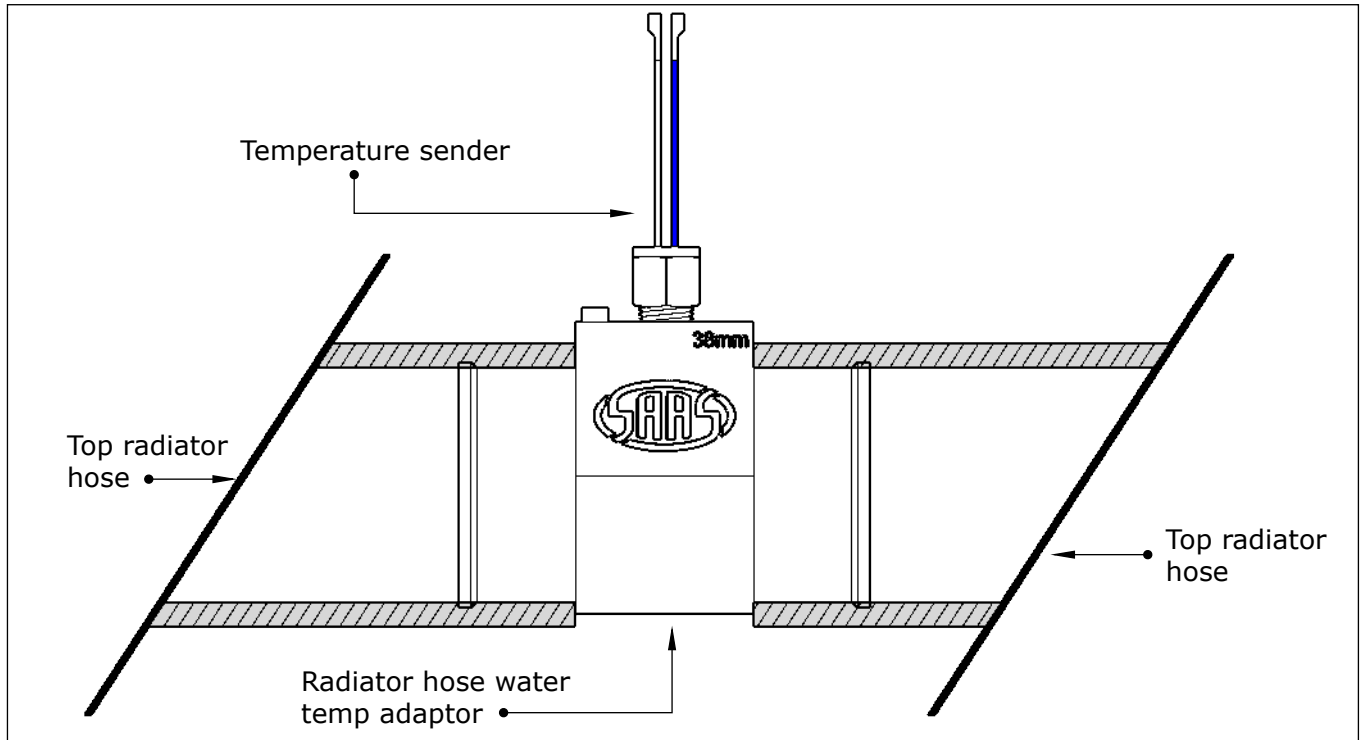


## Water Temp Sender Installation:

### - Recommended sender locations:

- Water temp senders should be installed in a radiator, water temp adaptor or cylinder head.

- The most common way of fitting a water temp sender is by using a radiator hose adaptor, the adaptor is fitted to the vehicles **TOP** radiator hose. The diagram below shows how a water temp sender and radiator hose adaptor is fitted.



## Important Fitting Notes For Installers:

### - How to pass cables and sensors through firewalls correctly:

**Option (A):** Drill or cut a hole into a rubber grommet making sure there is enough room behind not to damage any factory cables and enough space to pass your cables and sensors through **without** any force. **DO NOT** pull on connectors when feeding through firewalls or grommets!

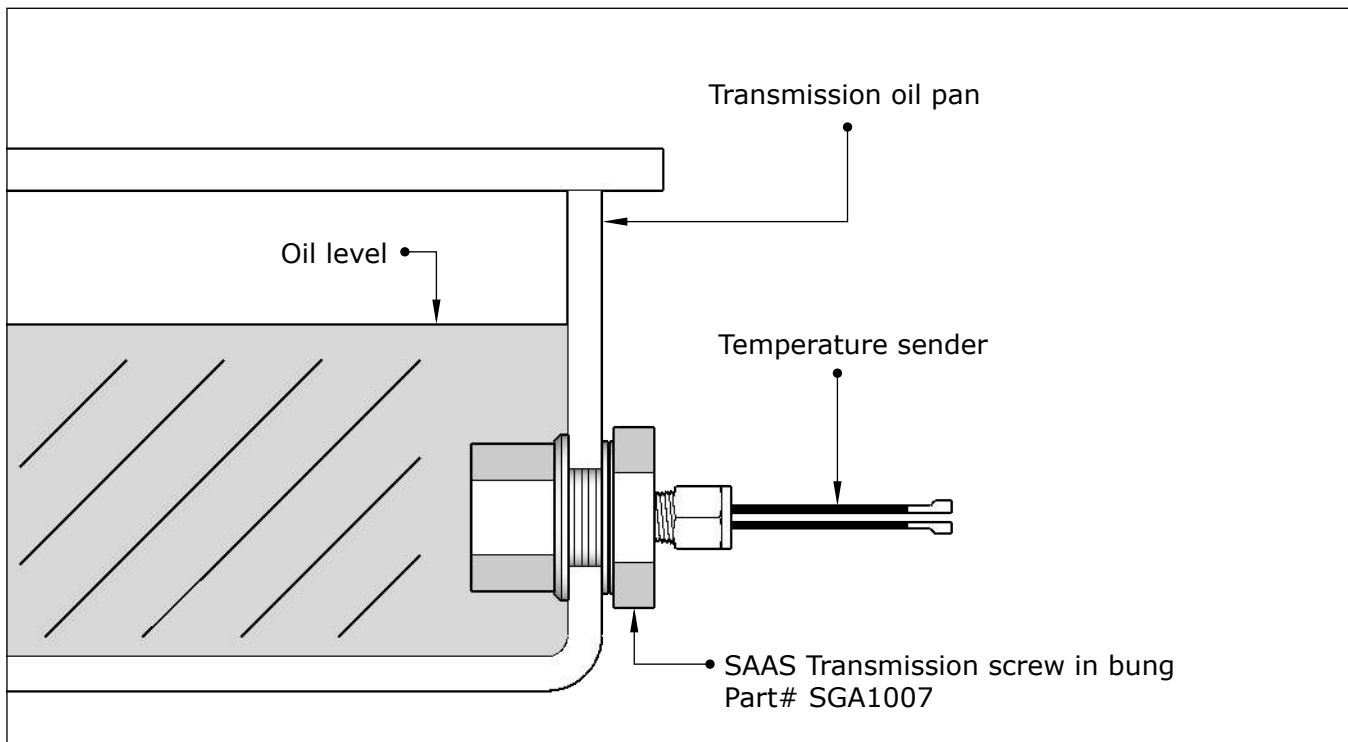
**Option (B):** Wrap some electrical tape around a wire coat hanger and around the connectors/ cables that you want to pass through the firewall, use some WD40 to lubricate the coat hanger so the connectors pass through the firewall grommet gently. **DO NOT** pull on connectors when feeding through firewalls or grommets!

**For further assistance email: [tech@saasautomotive.com.au](mailto:tech@saasautomotive.com.au)**

## Trans Temp Sender Installation:

**- Recommended sender locations:**

- Trans temp senders should be installed in the transmission oil pan.
- The most common way of fitting a trans temp sender is by using a transmission temp screw in bung that's installed on a flat section of the oil pan wall. SAAS also make a range of transmission line adaptors, see page 6 for part numbers.
- The diagram below shows a typical trans temp installation using a screw in bung.



## GAUGE INFORMATION

### Specifications

|                                     |  |
|-------------------------------------|--|
| Gauge operating range               | (water) 0°C > 150°C (trans) 0°C > 200°C                    |
| Gauge operating voltage             | 8v > 18v   |
| Water/trans temp sender ohms range  | 60KΩ > 0.9KΩ, scale: 50KΩ @ 21°C or 6.14KΩ @ 80°C          |
| Water/trans temp sender thread size | 1/8" NPT   |
| Water/trans temp sender dimensions  | total length 35mm  |
| Water/trans sender wire length      | 2 metre wiring harness / 100mm on sender                   |
| Gauge lighting type                 | 7 colour LED with 5 levels of brightness                   |
| Gauge lighting colours              | blue/red/green/purple/ice blue/yellow/white/OFF/cycle mode |
| Gauge power harness length          | 1 metre  |
| Gauge link harness length           | 300mm  |
| Mounting depth required for gauge   | 55mm (minimum)   |
| Total depth of gauge                | 55mm (including bezel)                                     |
| Mounting hole size for gauge        | 52mm   |
|                                     |  |
|                                     |  |

## Troubleshooting:

**Please note:** If you are having problems with the installation of this product, please do not contact your retailer or SAAS until you have read **ALL** the troubleshooting notes below.

| Problem                                       | Possible Cause   | Solution  |
|---|--|---|
| -gauge beeps but no display                   | -incorrect wiring<br>-display is set to (OFF)  | -refer to fitting instructions<br>-press button to change backlight colour  |
| -water reads (- - -)<br>-readings jump around | -sensor not plugged in<br>-water temp cable is too long or too thick<br>-sensor or cable damaged | -check connector on gauge and sensor<br>-use the supplied cable and only extend with the same thickness cable if needed<br>-test sender using a multimeter, a good sender should read:50KΩ@room temp 21°C<br><b>-see note below</b> |
| -trans reads (- - -)<br>-readings jump around | -sensor not plugged in<br>-trans temp cable is too long or too thick<br>-sensor or cable damaged | -check connector on gauge and sensor<br>-use the supplied cable and only extend with the same thickness cable if needed<br>-test sender using a multimeter, a good sender should read:50KΩ@room temp 21°C<br><b>-see note below</b> |
| -gauge beeps and flashes randomly             | -warning function activated  | -adjust warning settings accordingly  |

## Additional Troubleshooting Notes/Tips:

### - How to test a Trax water/trans temperature sender:

Disconnect the wiring from the temp sender and connect the white and blue sender wires to a multimeter, this test must be performed at room temp (21°C).

A good temp sender should read around 50K Ω @ room temp and will decrease when heat is applied. **(See page 4 for scale)**

## Contents:

| In The Box                                       | Qty | Notes | Part No. |
|--|-----|-------|----------|
| Water/trans temp gauge                           | 1   |       |          |
| Water temperature sender and 2 pin gauge harness | 1   |       | SG91001  |
| Trans temperature sender and 2 pin gauge harness | 1   |       | SG91009  |
| Gauge power connector                            | 1   |       | SG9100   |
| Gauge link connector                             | 1   |       | SG9101   |
| Mounting U bracket                               | 1   |       | SG61005  |
| Mounting U bracket studs (M4x0.7 thread)         | 2   |       |          |
| Mounting U bracket nuts                          | 2   |       |          |
| Fitting instructions                             | 1   |       |          |

**For further assistance email: [tech@saasautomotive.com.au](mailto:tech@saasautomotive.com.au)**

# ACCESSORIES & Installation Solutions

| Item  | Part No. |
|---|----------|
| Transmission temp screw bung 1/8 NPTF                                       | SGA1007  |
| Transmission rubber cooler T-fitting sender adaptor 5/16 - 3/8 black billet | SGA1009  |
| Transmission metal cooler T-fitting sender adaptor 5/16 black billet        | SGA1010  |
| Transmission metal cooler T-fitting sender adaptor 3/8 black billet         | SGA1011  |
| Water temp adaptor radiator hose 28mm black                                 | SWTA28B  |
| Water temp adaptor radiator hose 32mm black (also available in polished)    | SWTA32B  |
| Water temp adaptor radiator hose 34mm black (also available in polished)    | SWTA34B  |
| Water temp adaptor radiator hose 36mm black (also available in polished)    | SWTA36B  |
| Water temp adaptor radiator hose 38mm black (also available in polished)    | SWTA38B  |
| Water temp adaptor radiator hose 40mm black                                 | SWTA40B  |
| Metal gauge cup 52mm black  | SGC52BH  |
| Metal gauge cup 52mm chrome   | SGC52CH  |
| Plastic gauge cup 52mm black  | SGC52P   |

See our full range of installation components @  
**[www.shopsaas.com](http://www.shopsaas.com)**

### Gauge Mounting Solutions



### Sensor Mounting Solutions



### Spare Parts



## **Warranty Terms & Conditions:**

SAAS Automotive Pty Ltd warrants this product against defects in factory workmanship and materials for a period of twelve (**12**) months from the date of original purchase. This warranty applies to the first retail purchaser, is non-transferable and covers only where the product has been subjected to normal use or service. Provision of this warranty shall not apply to any SAAS Automotive product that has been used for a purpose for which it is not designed, or which has been altered in any way that would be detrimental to the performance or life of the product, or misapplication, misuse, negligence or accident. Warranty claims to the manufacturer must be transportation prepaid and accompanied with dated proof of purchase. On any part or product found to be defective after examination by SAAS Automotive Pty Ltd, SAAS Automotive Pty Ltd will only repair or replace the merchandise through the original selling dealer or on a direct basis. SAAS Automotive Pty Ltd assumes no responsibility for diagnosis, removal and/or installation labour, loss of vehicle use, loss of time, inconvenience or any other consequential expenses. The warranties herein are in lieu of any other expressed or implied warranties, including any implied warranty of suitability, and any other obligation on the part of SAAS Automotive Pty Ltd, or the selling dealer.

**For further assistance email: [tech@saasautomotive.com.au](mailto:tech@saasautomotive.com.au)**



SINCE 1954

SAAS Automotive PTY LTD  
25 Metrolink Circuit West, Campbellfield,  
Victoria 3061 Australia

ABN: 48166279670  
ACN: 166279670

Phone: +61 3 9930 0100  
Fax: +61 3 8339 2270  
Email: [tech@saasautomotive.com.au](mailto:tech@saasautomotive.com.au)  
Web: [www.shopsaas.com](http://www.shopsaas.com)