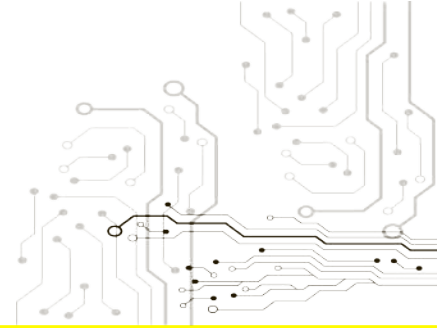




SINCE 1954

StreetLine SERIES



VOLTS *Installation Instructions*

Part No: SG21250
2 inch-52mm

v20190409

Important notes before installing:

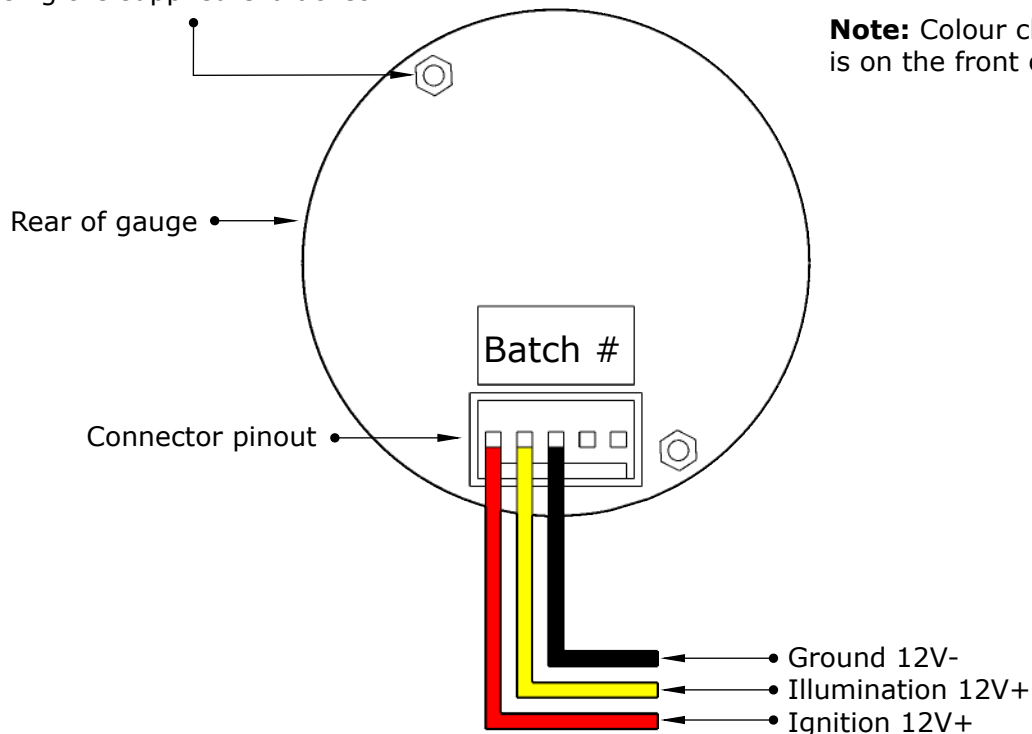
- Installing this product to your vehicle may require an adaptor. SAAS make a large range of adaptors and installation parts, please check with your SAAS dealer for available adaptors.
- SAAS Streetline series gauges are designed for **12volt** systems **ONLY!**
- All installation work should be done by a qualified professional to avoid damage to this product.
- SAAS **RECOMMENDS** all products be tested prior to installation. This will save time and speed up the troubleshooting process if you encounter any issues.

Wiring Guide:

Wire colour	Wire Function	Wire Connection Location
Red	Ignition 12V+	Ignition harness / Fuse box
Yellow	Illumination 12V+ (NOT adjustable)	Park light circuit (do NOT connect to a dimmer)
Black	Ground 12V-	Vehicle body

Wiring Diagram *Typical Layout*

Mounting studs for U bracket.
Fitting U bracket: Fit supplied stud spacers to threads before using the supplied U bracket.



GAUGE INFORMATION

Specifications

Operating range	8v > 18v
Operating voltage	8v > 18v
Gauge lighting type	7 colour LED (NON DIMMABLE)
Gauge lighting colours	blue/red/green/purple/ice blue/pale green/white/needle only/scan
Mounting depth required for gauge	65mm (minimum)
Total depth of gauge	70mm (including bezel)
Mounting hole size	52mm

Troubleshooting:

Please note: If you are having problems with the installation of this product, please do not contact your retailer or SAAS until you have read **ALL** the troubleshooting notes below.

Problem	Possible Cause	Solution
-gauge not reading	-bad connection	-check wiring for bad connections or wire gauge directly to a battery to test
	-gauge has been dropped	-replace gauge
-no back lighting	-incorrect wiring	-refer to fitting instructions
	-connected to a dimmer	-refer to fitting instructions
-lighting button stuck	-gauge face has been twisted	-twist face back so button lines up

Contents:

In The Box	Qty	Notes	Part No.
Volt gauge	1		
Wiring connector	1		SG2150
Mounting U bracket	1		SG21005
Mounting U bracket studs (M4x0.7 thread)	2		
Mounting U bracket nuts	2		
Fitting instructions	1		

For further assistance email: tech@saasautomotive.com.au

Warranty Terms & Conditions:

SAAS Automotive Pty Ltd warrants this product against defects in factory workmanship and materials for a period of twelve (**12**) months from the date of original purchase. This warranty applies to the first retail purchaser, is non-transferable and covers only where the product has been subjected to normal use or service. Provision of this warranty shall not apply to any SAAS Automotive product that has been used for a purpose for which it is not designed, or which has been altered in any way that would be detrimental to the performance or life of the product, or misapplication, misuse, negligence or accident. Warranty claims to the manufacturer must be transportation prepaid and accompanied with dated proof of purchase. On any part or product found to be defective after examination by SAAS Automotive Pty Ltd, SAAS Automotive Pty Ltd will only repair or replace the merchandise through the original selling dealer or on a direct basis. SAAS Automotive Pty Ltd assumes no responsibility for diagnosis, removal and/or installation labour, loss of vehicle use, loss of time, inconvenience or any other consequential expenses. The warranties herein are in lieu of any other expressed or implied warranties, including any implied warranty of suitability, and any other obligation on the part of SAAS Automotive Pty Ltd, or the selling dealer.

For further assistance email: tech@saasautomotive.com.au

www.shopsaas.com





SINCE 1954

SAAS Automotive PTY LTD
25 Metrolink Circuit West, Campbellfield,
Victoria 3061 Australia

ABN: 48166279670
ACN: 166279670

Phone: +61 3 9930 0100
Fax: +61 3 8339 2270
Email: tech@saasautomotive.com.au
Web: www.shopsaas.com